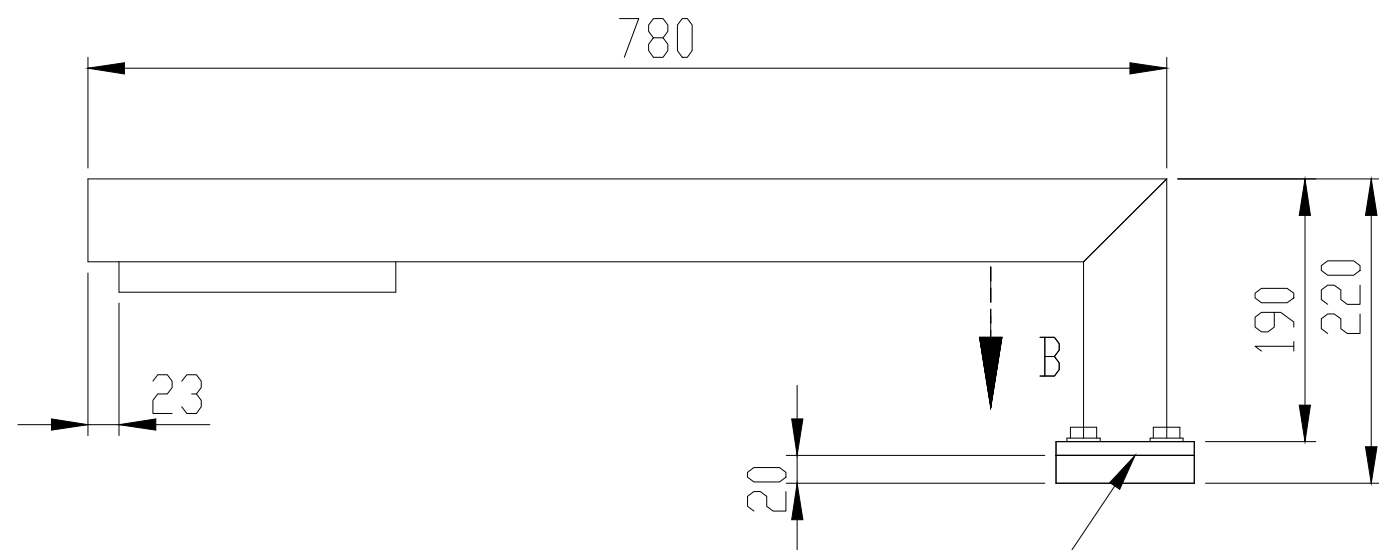
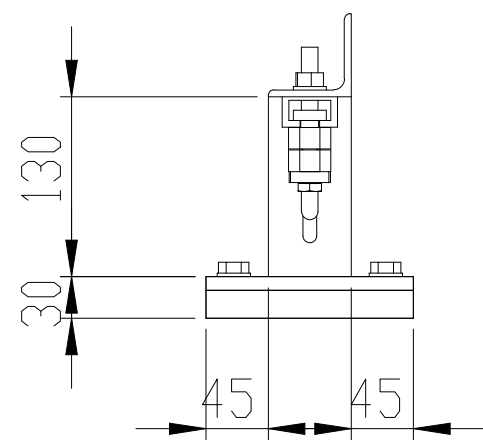
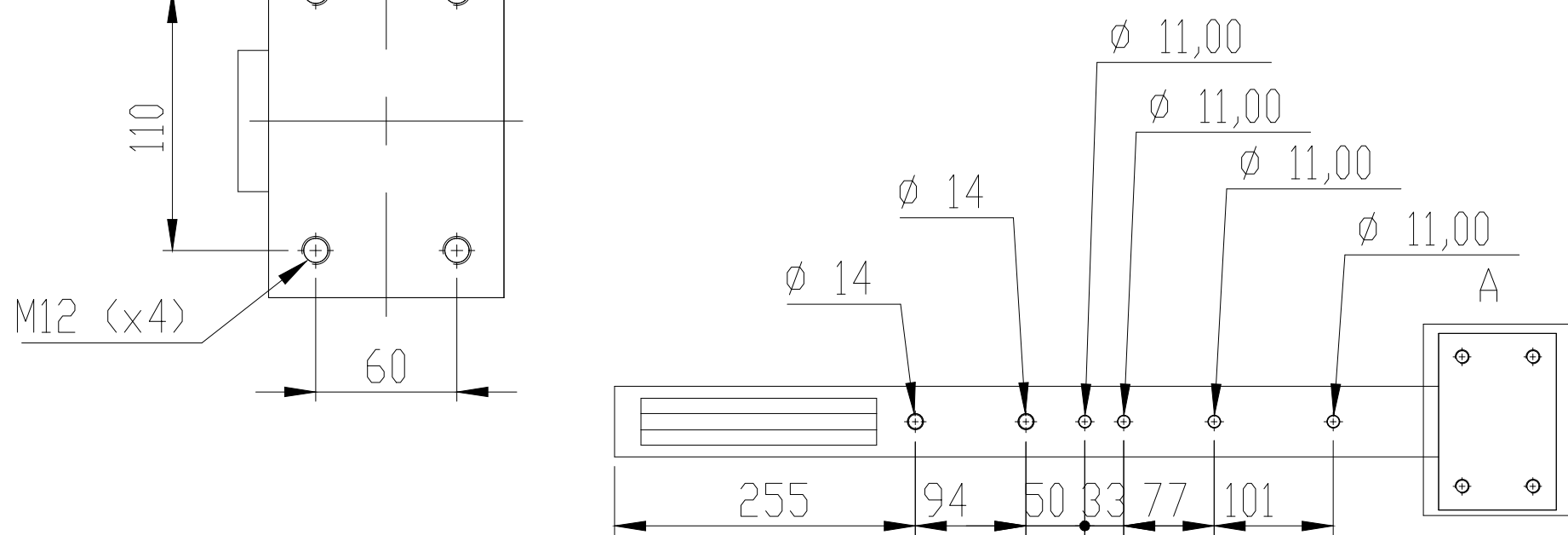
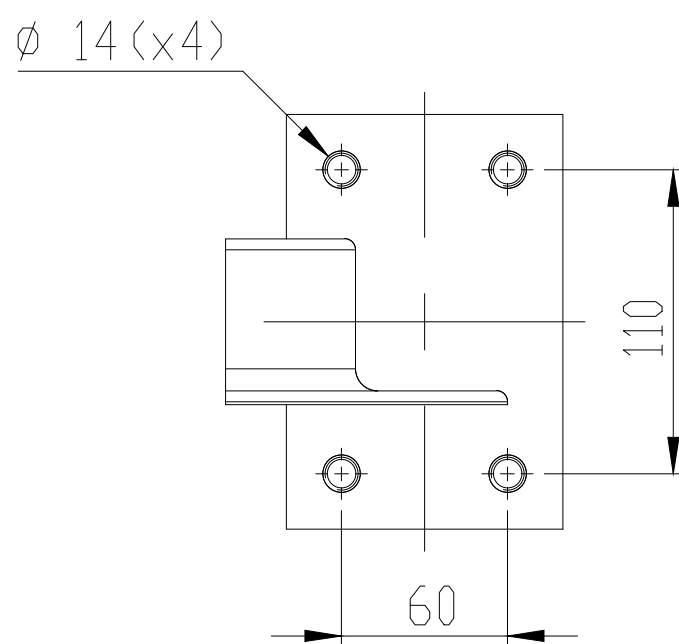


DETAIL A
ESCALE 1 : 4

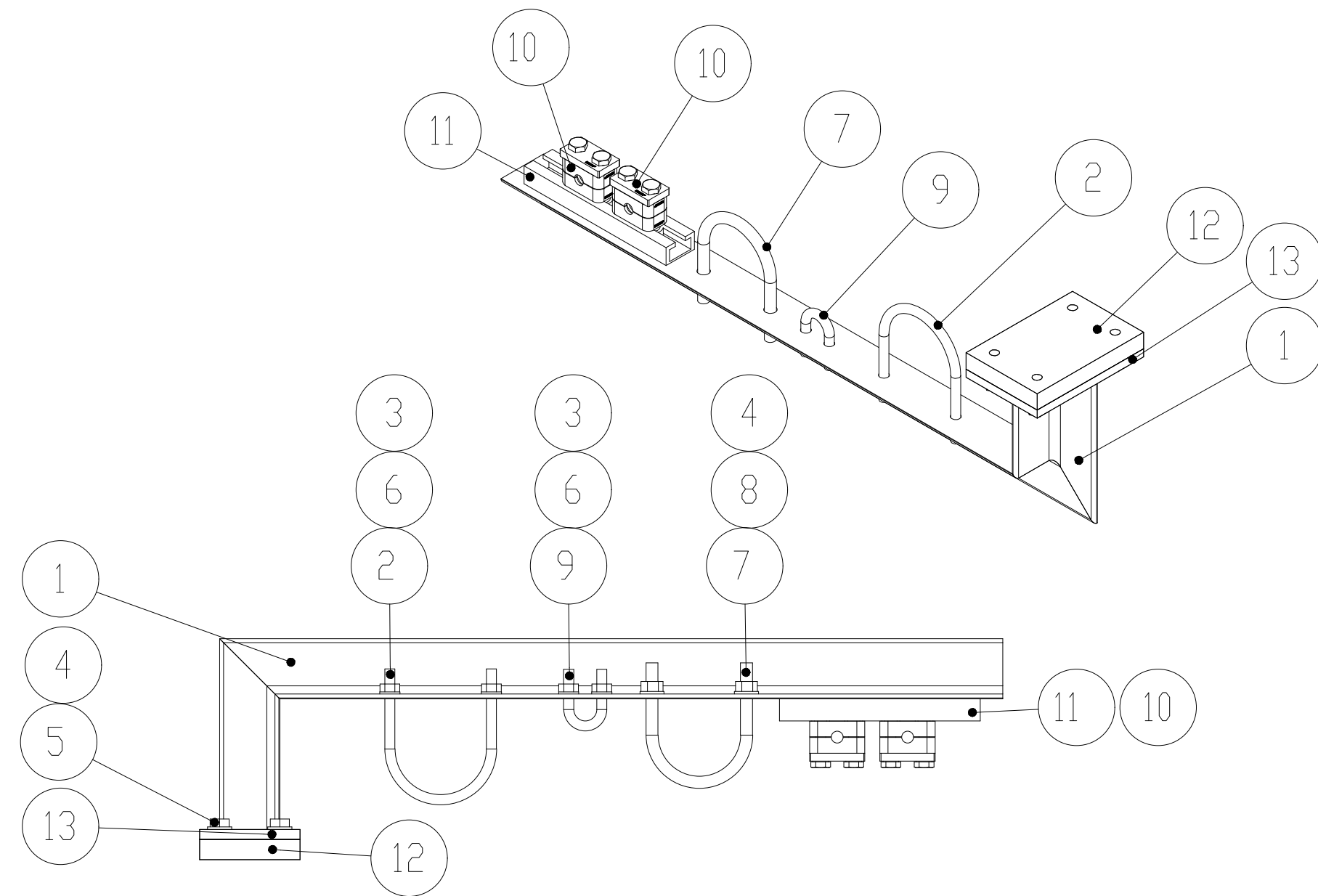


DON'T WELD



VIEW B
ESCALE 1 : 4

2558-3322-SPT-0XX (ANG 60X60 - 3UNDS)
2558-3323-SPT-0XX (ANG 60X60 - 3UNDS)
2558-3324-SPT-0XX (ANG 60X60 - 3UNDS)



Nº	Reference	Description	Material	QTY
1	ANGLE PROFILE 60x60x5 L=970mm	ANGLE PROFILE 60x60x5 L=970mm	S275JR	1
2	U-BOLT 3"	U-BOLT 3"	COMERCIAL	1
3	WASHER DIN 125 M10	WASHER DIN 125 M10	ACERO	4
4	WASHER DIN 125 M12-St	WASHER	ACERO	6
5	HEXAGONAL SCREW DIN 933 M12 x 30 - 8.8	HEXAGONAL SCREW DIN 933 M12 x 30 - 8.8	8.8	4
6	NUT DIN 934 M10 -10	NUT DIN 934 M10 -10	8	4
7	U-BOLT DN 65	U-BOLT DN 65	COMERCIAL	1
8	NUT DIN 934 M12 - 12	NUT DIN 934 M12 - 12	COMERCIAL	2
9	U-BOLT 1/2"	U-BOLT 1/2"	COMERCIAL	1
10	CLAMP Ø12 HEAVY SERIE GROUP 3 AL DPAL AS DIN3015	CLAMP Ø12 HEAVY SERIE GROUP 3 AL DPAL AS DIN3015		2
11	RAIL 200 STSV LENGHT 200 mm WITH 2 DRILLS Ø14 CS	RAIL 200 STSV LENGHT 200 mm WITH 2 DRILLS Ø14 CS	S275JR	1
12	S235JR L PLATE 150 x100 x 20	S235JR L PLATE 150 x100 x 20	S235JR	1
13	S235JR L PLATE 150 x 100 x 10	S235JR L PLATE 150 x 100 x 10	S235JR	1

Rev.	Modification	Date	Name
------	--------------	------	------

This drawing is property of INSERTEC. Must not be copied or transferred to third parties in any way without written authorization.

Tolerance for dimensions without tol. according to ISO 2768-mK										Date	Name	Material
More than	0.5	3	6	30	120	400	1000	2000	Drawn	07/05/2025	IGK	Weight (kg)
Less	3	6	30	120	400	1000	2000	4000				
Machine Tool	±	±	±	±	±	±	±	±	Checked	07/05/2025	JCMH	
Welded	0.1	0.1	0.2	0.3	0.5	0.8	1.2	2	Verified	07/05/2025	BU	

Customer:									Format: A3			Title	
									Scale: 1:8				

Project Methode:									Part Number			Revision	
									Customer Number			Sheet 1/1	

